

# Li-Mineralization at Tres Arroyos (Alburquerque, Badajoz) as a result of the mineralogical and geochemical evolution of the Alburquerque batholith

La mineralización de Li de Tres Arroyos (Alburquerque, Badajoz), como resultado de la evolución mineralógica y geoquímica del batolito de Alburquerque

M. Gallego (\*) (\*\*) y P. Gumiel (\*)

(\*) Dir. Recursos Minerales ITGE, Ríos Rosas 23, 28003 Madrid

(\*\*) Dept. Geology, The University, Southampton SO9 5NH, U.K.

## ABSTRACT

La mineralización de Tres Arroyos está formada por un haz de pegmatitas litíferas situado en el límite SW del batolito de Alburquerque. Los diques pegmatíticos aparecen en transición petrológica y geoquímica con el batolito, constituido por granitos de dos micas y diversas facies leucograníticas marginales. Geoquímicamente, los grupos litológicos establecidos corresponden a granitos calcoalcalinos, peraluminicos, fértiles, con elevados contenidos en P y F. La evolución geoquímica observada se caracteriza por un fraccionamiento extremo, con concentración de elementos incompatibles (Li, Rb, Cs, Ga, Sn, Nb, Ta) en las fracciones magmáticas residuales y una evolución compleja en cuanto a los contenidos en Tierras Raras.

**Key words:** Li-pegmatites, fertile granite, geochemical fractionation.

Geogaceta, 13 (1993), 29-32

ISSN: 0213683X

## Introduction: geological setting

The Tres Arroyos Li-mineralization is located at the SW margin of the Alburquerque batholith in the Central-Iberian Zone of the Hercynian Massif, close to its southern limit to the Ossa-Morena Zone (Fig. 1). The mineralization consists of a N120-140°E trending pegmatite dyke-swarm striking parallel to the batholith contact. Both the dyke-swarm and the batholith are considered to be late events in the Hercynian Orogeny (K/Ar  $287 \pm 10$  Ma., Penha y Arribas, 1974; Rb/Sr  $286 \pm 3.6$  Ma., Roberts *et al.*, 1991). The Hercynian Orogeny was characterized in the area by a long-lived left-lateral transpressive regime, with greater strike-slip shear-component towards the Ossa-Morena Zone and prevalent folding and thrusting to the N (Sanderson *et al.*, 1991). The Alburquerque batholith represents the northern margin of this transpressive zone and intrude into a releasing bend within the shear zone (Sanderson *et al.*, *op. cit.*).

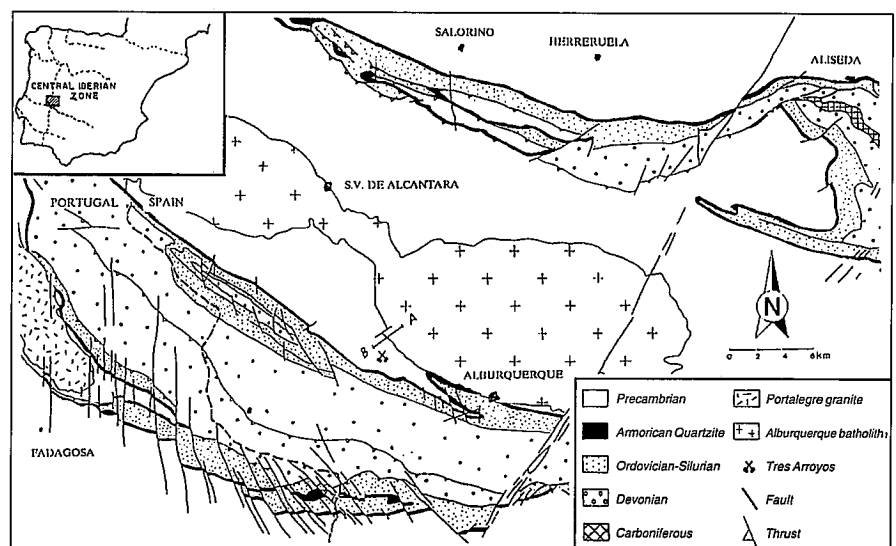
Host-rocks are part of a low-grade metasedimentary sequence comprising phyllites, slates, schists and minor quartzites and metagreywackes

belonging to the so-called "Complejo Esquisto - Grauváquico" (Schists-Greywacke Complex, presumably Precambrian in age). The series show lower greenschists facies due to regional metamorphism and in the vicinity of the batholith are affected by contact

metamorphism leading to the formation of cordierite porphyroblasts. Pegmatitic dykes intrude at high-angle with respect to the main hercynian cleavage and contribute to the development of a small-scale crenulation cleavage parallel to the dykes contacts.

Fig. 1.— Regional geology and location map.

Fig. 1.— Esquema geológico de situación.



The Albuquerque granite is a peraluminous batholith with associated U-, P-, Sn-, and Li-mineralization, and in the area provides a good example of a complete and gradual mineralogical and geochemical transition between granite and Li-pegmatites.

**Petrography**

From NE to SW five main granite facies have been distinguished (Fig. 2):

1. The Central Granite Facies (CGF), which consists of a porphyritic two-mica granite with microcline megacrysts. Groundmass is a coarse-grained assemblage of quartz-K feldspar-plagioclase-biotite-muscovite with minor garnet. Accessory minerals include andalousite, cordierite, apatite, zircon, ilmenite and phosphates.

2. The Marginal Granite Facies (MGF), a finer-grained, generally aplitic, assemblage of albite - quartz - K

feldspar - muscovite - tourmaline with minor biotite. Accessory minerals comprise andalousite, apatite, zircon and monazite.

3. The Layered Aplite-Pegmatite Sequence (LAP), which represents a transition from the MGF and occurs as a N130-140°E trending sheet dipping slightly towards NE, intruding the Precambrian Schists of the Complejo Esquisto-Grauváquico. It is characterized by a layered sequence of aplitic and

Element	CGF (3)		MGF (3)		LAP (3)		LED (2)		LIP (11)	
	AVG	SD	AVG	SD	AVG	SD	AVG	SD	AVG	SD
(%)										
SiO <sub>2</sub>	72.18	0.21	72.85	0.38	71.07	0.28	69.52	0.41	68.95	1.39
Al <sub>2</sub> O <sub>3</sub>	13.93	0.32	14.47	0.08	15.67	0.58	16.81	0.10	17.56	0.90
Na <sub>2</sub> O	3.49	0.08	3.67	0.13	4.81	0.38	5.37	0.52	5.94	1.11
K <sub>2</sub> O	4.97	0.19	4.17	0.21	3.02	0.48	2.18	0.28	1.89	0.62
CaO	0.57	0.06	0.29	0.07	0.18	0.04	0.56	0.18	0.37	0.33
MgO	0.31	0.04	0.06	0.00	0.04	0.01	0.05	0.01	0.09	0.06
Fe <sub>2</sub> O <sub>3</sub>	1.82	0.21	1.01	0.17	0.80	0.25	0.41	0.15	0.90	0.59
P <sub>2</sub> O <sub>5</sub>	0.36	0.03	0.61	0.12	1.15	0.36	1.36	0.29	0.79	0.55
F	0.08	0.06	0.30	0.15	0.51	0.12	0.61	0.15	0.37	0.39
ASI	1.12	0.01	1.27	0.01	1.31	0.06	1.29	0.11	1.35	0.14
A/CNK	1.14	0.02	1.30	0.01	1.36	0.06	1.38	0.01	1.42	0.15
Mol Na/K	0.95	0.03	1.20	0.10	2.24	0.52	3.44	0.53	4.84	2.12
(ppm)										
Li	307	21.55	354	31.79	566	136.06	1121	468.0	743	903.58
Rb	345	32.56	574	102.36	938	103.71	1069	1.05	933	621.27
Cs	23	7.35	40	7.13	98	52.63	39	4.50	31	31.75
Ga	23	0.47	32	1.62	35	5.98	43	4.50	49	6.36
Sn	21	4.07	40	3.66	66	14.45	464	317.6	409	395.93
Nb	17	1.7	20	3.35	38	4.23	72	15.75	76	15.39
Ta	4	2.05	8	2.16	21	3.68	87	37.50	93	40.52
Sr	30	3.56	24	8.51	11	6.07	301	50.90	232	199.30
Ba	178	25.43	23	2.81	18	6.39	48	15.35	62	33.41
Zr	112	22.46	26	1.96	25	7.73	24	6.50	40	19.23
K/Rb	118.5	14.11	36.70	5.81	44.30	12.00	16.56	2.11	19.01	4.65
K/Cs	2006	724	895	222	337	190	470	111	652	199
K/Ba	230.3	27.8	1519	166.3	1433	245.5	390.7	77.8	354.3	290.1
Mg/Li	6.63	1.28	1.05	0.17	0.52	0.17	0.38	0.21	1.52	1.50
Rb/Cs	16.54	4.62	24.08	2.07	7.04	2.26	28.00	3.15	34.22	8.93
Rb/Sr	11.81	2.70	47.17	20.79	102.1	96.90	3.66	0.62	7.87	7.61
Ba/Rb	0.53	0.12	0.02	0.00	0.03	0.02	0.05	0.01	0.10	0.08
Al/Ga	3163	113	2367	108	2468	462	2088	231	1919	229
Zr/Y	9.17	1.64	6.62	1.43	20.12	6.88	34.60	0.60	20.57	15.50
Zr/Sn	5.79	2.13	0.65	0.11	0.37	0.05	0.12	0.09	0.49	0.62
Nb/Ta	4.69	1.59	2.5	0.20	1.92	0.55	0.92	0.22	0.92	0.30

Table 1.- Summarized data for major and trace elements contents and geochemical coefficients for the Tres Arroyos facies. ASI calculated as mol Al<sub>2</sub>O<sub>3</sub>/Σmol (CaO+Li<sub>2</sub>O+Na<sub>2</sub>O+K<sub>2</sub>O+Rb<sub>2</sub>O) as suggested by London (1992) for Li-rich granites. ( ) : number of analyses; AVG: average; SD: Standard deviation.

Tabla 1.- Resumen de los contenidos en elementos mayores, trazas y coeficientes geoquímicos de las facies de Tres Arroyos. ISA calculado como mol Al<sub>2</sub>O<sub>3</sub>/Σmol (CaO+Li<sub>2</sub>O+Na<sub>2</sub>O+K<sub>2</sub>O+Rb<sub>2</sub>O) como ha sido sugerido por London (1992) para granitos ricos en Li. ( ) : número de análisis; AVG: media; SD: Desviación estándar.

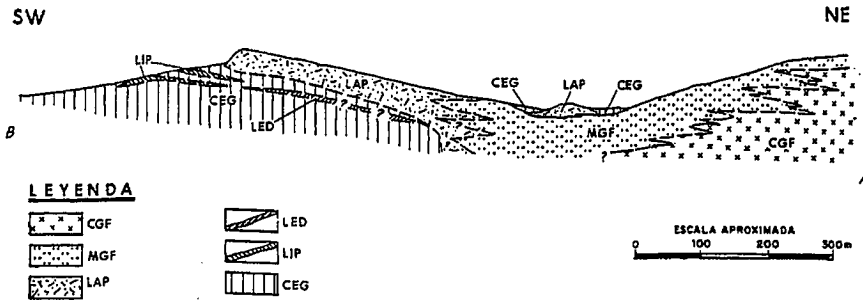


Fig. 2.— Idealized geological cross-section (A-B) of the Tres Arroyos area. Facies labels correspond to those described in text. CEG: Schist-Greywacke Complex.

Fig. 2.— Sección geológica idealizada (A-B) del sector de Tres Arroyos. Las abreviaturas corresponden a las descritas en el texto. CEG: Complejo Esquisto-Grauwáquico.

pegmatitic levels, usually parallel to the strike and dip of the sheet. While aplites are mineralogically similar to MGF (with abundant topaz), the pegmatitic levels are made up of K-feldspar-quartz-albite-muscovite and tourmaline, forming occasionally miarolitic cavities.

4. The Leucocratic Dyke (LED), which is observed in the northern part of the area. This is a N148°E/38°SW trending dyke composed by K-feldspar and albite phenocrysts in a aplitic groundmass of plagioclase-quartz-muscovite-topaz-amblygonite.

5. The Lithium Pegmatites (LIP) are subhorizontal zoned dykes, in which several mineral assemblages can be distinguished:

—Cleavelandite-quartz-topaz unit, up to 10 cm thick, discontinuous and observed in the upper contact of the dykes.

—Quartz-K feldspar-Plagioclase unit, variable in grain size and usually being the contacts with the host-rocks.

—Albite - lepidolite - quartz layered unit, characterized by a banded texture of alternating aplitic and pegmatitic bands of the same composition in the inner parts of the dykes. Topaz and amblygonite are abundant.

—Quartz unit, in contact with the quartz-K feldspar-plagioclase unit or filling late fractures.

**Geochemistry**

In order to characterize the geochemical features and evolutionary trends of the different facies, major and trace elements and REE's were analyzed in all the rock groups. Data are summarized in Table 1.

All the facies show high Al<sub>2</sub>O<sub>3</sub> contents, moderate to high contents of Na<sub>2</sub>O+K<sub>2</sub>O, SiO<sub>2</sub>, P<sub>2</sub>O<sub>5</sub> and F, and low Fe<sub>2</sub>O<sub>3</sub>, CaO and MgO values, forming a calc-alkaline association plotting in the I and II fields of the AB diagram (Debon & Le Fort, 1983). They are also markedly peraluminic, as shown by values of ASI and A/CNK > 1.

An evolutionary trend is observed from CGF to LIP consisting in an increase of Al<sub>2</sub>O<sub>3</sub>, ASI and A/CNK values. SiO<sub>2</sub> values show a slight increase in MGF, followed by a steady decrease from the layered sequence to the Li-pegmatites. Moreover, the rocks become progressively more sodic, as shown by the increasing values of Mol Na/K, which is consistent with the

presence of albite as predominant feldspar in the outer facies. Finally, trends for P<sub>2</sub>O<sub>5</sub> and F are irregular, increasing from CGF to LAP and LED respectively, and decreasing in the Li-pegmatites. However, considerable scattering of data occur in the pegmatites for these elements as a result of their internal compositional heterogeneity: samples including the layered albite-lepidolite-quartz-(topaz-amblygonite) unit show high concentrations of P<sub>2</sub>O<sub>5</sub> and F.

Regarding the trace elements, the facies generally show high concentrations of Li, Rb, Cs, Ga, Nb, Ta and Sn, and low for Ba and Zr. From CGF to LIP, an increase in the concentration of incompatible elements (Li, Rb, Ga, Nb, Ta, Sn) is observed. For the compatible elements Ba, Zr and Sr, an initial decreasing trend is followed by an increase in their concentration in the extragranitic dykes.

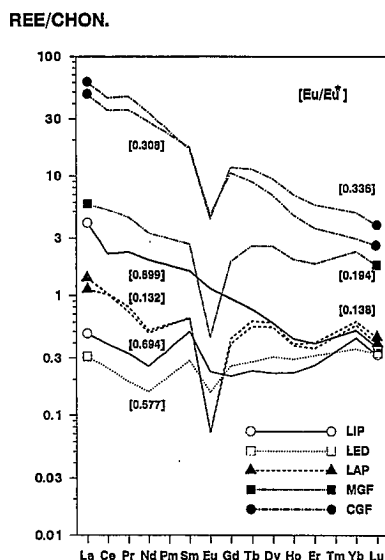
REE's contents are highly variable, with a significant decrease of ΣREE in the outermost facies. From the central granite CGF to the leucocratic dyke LED, there is a continuous decrease in ΣREE and (Ce/Yb)<sub>n</sub> values (Fig. 3). The Eu/Eu\* ratio shows a similar evolution, with a slight increase in LED. However, this trend is reversed in the Li-pegmatites that present higher REE's contents and (Ce/Yb)<sub>n</sub> values, together with a clear reduction of the Eu anomaly.

**Discussion**

The facies observed at Tres Arroyos show a gradual transition from the centre (CGF) to the margin (LIP) of the Albuquerque batholith. This is characterized by a) a change in the type of mica phase in the sense biotite (CGF) - muscovite (MGF, LAP, LED) - lepidolite (LIP); b) progressive substitution of K-feldspar by albite as the dominant feldspar phase; c) a change in the type of accessory peraluminous minerals (from andalusite-cordierite in CGF to topaz-amblygonite in LED and LIP); d) the existence of rare-elements phases together with a progressive development of pegmatitic fabrics in the external facies (LAP, LED and LIP). Both the nature and sequence of facies are similar with those described as typical of fertile granites (Cerny & Meintzer, 1988).

Fig. 3.— Chondrite-normalized REE values of Tres Arroyos Facies.

Fig. 3.— Valores de Tierras Raras normalizados respecto a la condrita de las facies de Tres Arroyos.



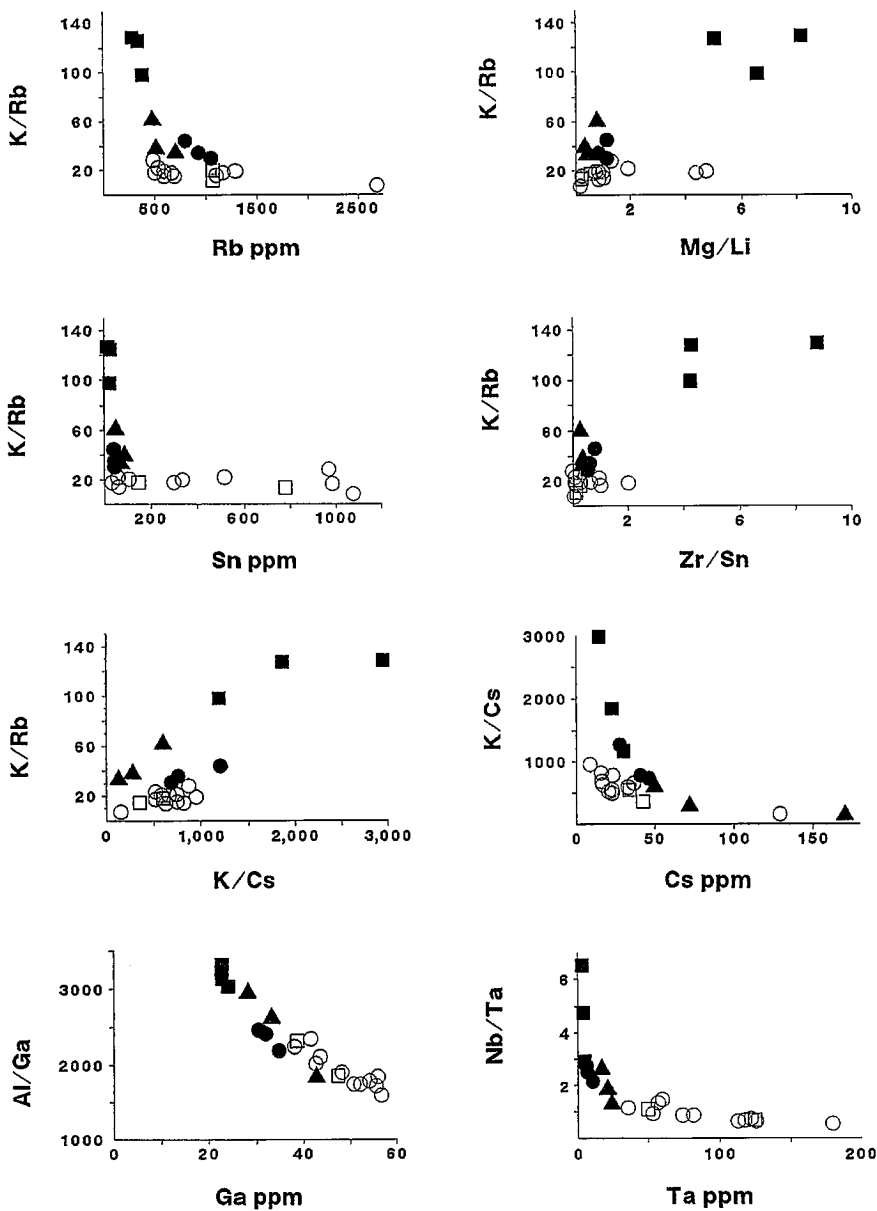
The geochemical data for major and trace elements also support the idea of considering the facies of Tres Arroyos as typical of a fertile granite (sensu Cerny & Meintzer, op. cit.). The transition from CGF to LIP shows an increase of the peraluminous and sodic character of the magma (ASI and mol Na/K ratios), together with a decrease of the SiO<sub>2</sub> contents. Trace elements

data show an increase in the concentrations of incompatible elements in the magma (particularly the rare-elements). Finally, the comparison between major and trace elements behaviour shows an extreme geochemical fractionation from CGF to LIP (Fig. 4), characterized by decreasing K/Rb, Al/Ga and Mg/Li ratios, among others.

Both the petrological and the geochemical evolution from the central facies to the Li-pegmatites are considered to be the result of differentiation of a fertile magma through a fractional crystallization process (Gallego, 1992). The changes observed in the magmatic evolution probably stem from the changes in the magma properties (composition of eutectic minimum, solidus and liquidus temperatures and viscosity, among others) derived from its high F- and particularly P-contents. Regarding the latter, the study of phosphorous content of magma through P concentration in alkali feldspars (London, 1992), shows that the different magma batches at Tres Arroyos were phosphorous-rich (Gallego, op. cit.). The consequences of such concentrations can explain the changes observed in ASI and mol Na/K values and the rare-elements concentration from CGF to LIP (D. London and M. Gallego, in preparation).

Fig. 4.— Variation diagrams K/Rb vs. Rb, Mg/Li, Sn, Zr/Sn; K/Cs vs. Cs; Al/Ga vs. Ga and Nb/Ta vs. Ta, indicating geochemical fractionation from CGF to LIP.

Fig. 4.— Diagramas de variación K/Rb frente a Rb, Mg/Li, Sn, Zr/Sn; K/Cs frente a Cs; Al/Ga frente a Ga y Nb/Ta, indicando un fraccionamiento geoquímico de CGF a LIP.



LIP    LED    LAP    MGF    CGF  
 ○    □    ▲    ●    ■

**Acknowledgements**

The authors are greatly indebted to Dr. David London (University of Oklahoma) for help and collaboration throughout this study. Geochemical analyses were carried out at the Geology Dept. of the University of Southampton (UK), except REE's analyzed at the ICP-MS facility of the Royal Holloway and Bedford New College (Surrey, UK) through a NERC grant. This study was funded by the Spanish Education and Research Ministry with two grants at I.T.G.E. and the University of Southampton.

**References**

Cerny, P. & Meintzer, R. (1988): In "Recent advances in the geology of granite-related mineral deposits", CIM Spec., 39, pp. 179-207.  
 Debon, F. & Le Fort, P. (1983): *Trans. Rev. Soc. Edimburgh Earth Sci.*, 73, pp. 135-149.  
 Gallego, M. (1992): Tesis Doctoral UCM, 328 pp.  
 London, D. (1992): *Am. Mineral*, 77, pp. 126-145.  
 Penha, M. H. & Arribas, A. (1974): *Bol. Geol. Min.*, 85-3, pp. 271-273.  
 Roberts, S.; Sanderson, D.; Gumiel, P. & Dee, S. (1991): *Econ. Geol.*, 86, 1.012-1.022.  
 Sanderson, D., Roberts, S.; Gumiel, P. & Mc Gowan, J. (1991): *Jour. Geol. Soc.*, 148, 893-898.